

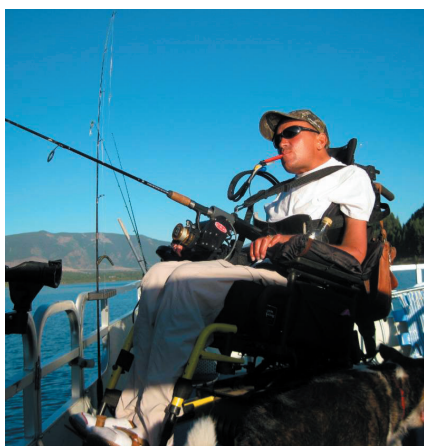


## In This Issue...

County Updates.....	2
COVID-19 Vaccing Info.....	3
New Staff.....	4
SS Orientation.....	5
Missoula Gives.....	6
BASE Events.....	7

## ***IN REMEMBRANCE OF CHRISTOPHER CLASBY*** ***~1973 - 2021~***

### ***Good Ride Cowboy!***



It is with a heavy heart and great sorrow that we must say farewell to one of our good friends and colleague, Chris Clasby who passed on April 5, 2021. Chris joined the Summit team in 2012, working as the organization's peer advocacy

coordinator. Before joining Summit as a staff member, Chris also served on the Summit board of directors in the 1990's, was involved with the peer program at that time as a volunteer peer advocate, and later did his practicum for his MSW at Summit. As peer advocacy coordinator, Chris' passion for working with people with disabilities to help them realize their full potential and work to ensure that recreational opportunities like hunting, fishing, or even hiking are fully accessible and inclusive of people with disabilities shined bright. Chris not only served as a role model for many, he was also a friendly voice and someone who could talk with anyone about anything and make it seem like you have known him for years. Chris touched not only the lives of those who worked closely with him but of all he had contact with, both on a personal and professional level.

From the rodeo arena as a steer wrestler, to the

great outdoors, to his work with Summit, Chris always charged full-steam ahead confronting any obstacle in his way head-on. In his absence, we know that he would want us to continue charging forward, fighting the good fight to ensure that all individuals with disabilities not only have access to basic needs but that they also have access to equal social, economic, and recreational opportunities as our non-disabled peers and so, charge forward we must. We will strive to continue Chris' legacy through our work in disability advocacy, our quest for inclusive systems/environments, and our connections with the individuals we serve. As we say goodbye to our good friend, we ask that you keep Chris and his family in your thoughts and join us as we move forward and commit to that legacy of making the world around us a better, more inclusive place than how we found it. Good ride Cowboy!



# Summit Branch Offices Updates

## Ronan Update

We have been very busy in the Ronan office using CARES Act funds to help people get phone plans, phones, computers, gas, food, and Covid supplies.

CARES Act Success story -- A Ronan Summit office Consumer is waking up a lot safer.

After losing her job as a result of Covid-19, one of our consumers became homeless. Already dealing with several disabilities she then fractured her leg. Attempting to board a bus she fell and fractured her arm as well. With the help of Summit and CARES Assistance she went from being homeless to a motel, and is now in an apartment of her own! She is able to use her stimulus money to tackle some transportation issues so she can "get back to work as soon as possible!" You go girl

The Art & Activities group has been meeting each Thursday from 1-3pm. They are planning a poetry slam on April 1st and soon will have another tie dying session, this time we have very nice washable white cotton masks for them to tie dye!

We will soon begin recruiting participants for the new virtual Living Well in the Community class.

The LWC class now has an online platform that is fun and educational!

For more information about Summit Ronan resources and classes please call (406) 215-1604.

## Kalispell Update

Hello from Kalispell! Spring is in the air! We hope everyone is enjoying the sunshine.

The pandemic has reshaped the way many things get accomplished...Would you benefit from more training using video platforms via a computer (desktop, laptop, tablet, etc)? There are many more opportunities now to use the internet with video platforms for informational meetings, social gatherings and web-based trainings (think Telehealth, Zoom meetings, Skype, Google Meet, etc.)!

Summit Independent Living has partnered with MonTech to provide some training to address these needs.

If you are interested, please call Lynae at the Summit office in Kalispell (406) 257-0048, Ext. 2).

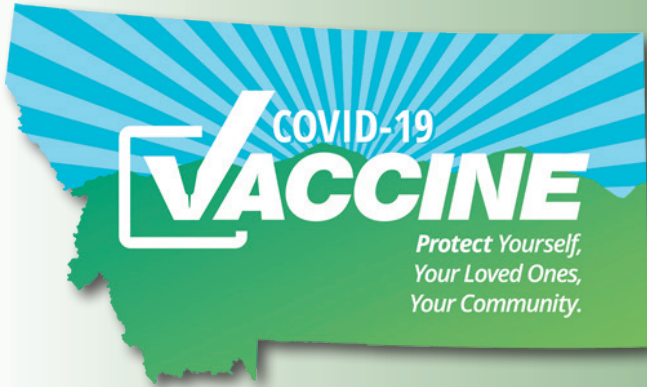
## Summit Missoula Mental Health Counseling

These are unprecedented times, and Summit Independent Living is in the position to extend more services. Summit can provide time limited, solution focused mental health counseling at no cost during this pandemic. Our staff include individuals with Masters Degrees in Social Work, who operate under a Licensed Clinical Social Worker. In order to work within our areas of competence, we may need to refer to another mental health specialist outside of our agency.

Please contact Bronwyn Troutman for more information at:

[btroutman@summitilc.org](mailto:btroutman@summitilc.org) or

406-728-1630 ext.121.



# Montana COVID-19 Vaccination Plan Update

Beginning April 1, 2021, the State of Montana will allow vaccination of all individuals, aged 16 years and older, due to an increase in vaccine supplies, the addition of more vaccine partners, and successful vaccine administration at the local level. Jurisdictions may continue to prioritize allocation among their local populations to match local supply and demand as needed. Jurisdictions wishing to vaccinate all eligible individuals prior to April 1, 2021, are encouraged to consult with the DPHHS immunization program to review plans.

## **Local Information on Vaccine Availability and Scheduling in Your Community:**

<https://dphhs.mt.gov/publichealth/cdepi/diseases/coronavirusmt/covid19vaccineavailability>

## **Information on Number of Vaccines Administered in Montana:**

<https://montana.maps.arcgis.com/apps/MapSeries/index.html?appid=7c34f3412536439491adcc2103421d4b>

## **Montana Vaccine FAQ:**

<https://dphhs.mt.gov/covid19vaccine/covid19vaccinefaq>

## **CDC Vaccine Information:**

<https://www.cdc.gov/vaccines/covid-19/index.html>

## **Links to reliable information related to COVID-19**

Centers for Disease Control and Prevention (CDC):

<https://www.coronavirus.gov>

World Health Organization:

<https://www.who.int/emergencies/diseases/novel-coronavirus-2019>

Montana Department of Public Health and Human Services:

<https://dphhs.mt.gov/publichealth/covid>

Social Security and COVID- 19:

<https://www.ssa.gov/coronavirus/>

The ADA and Face Mask Policies:

<https://www.adasoutheast.org/ada/publications/legal/ada-and-face-mask-policies.php>

Your Local County or Tribal Health Department:

<https://dphhs.mt.gov/publichealth/FCSS/countytribalhealthdepts>



**SUMMIT STAFF****Missoula County****Executive Director**

Mike Mayer

**Financial Officer**

Scott Fels

**Assistant Bookkeeper**

Victoria Lahr

**Administrative Assistant**

Kathy Nolte

**Program Support Specialist**

Mike Giddings

**SD-CFC/PAS Program Manager**

Beth Anderson

**SD-CFC/PAS Coordinator**

Patti Montgomery-Stewart

**SD-CFC/PAS Coordinator**

Becca Kwon

**SD-CFC/PAS Assistant/Insurance**

Jessica Workman

**Advocacy Coordinator**

Travis Hoffman

**Peer Advocacy Coordinator**

Vacant

**Outreach/Employment Coordinator**

Gavin Workman

**Independent Living Specialist**

Donna Graham

**Independent Living Specialist**

Tyler Stosich

**Community Living Specialist**

Bronwyn Troutman

**Youth Coordinator**

Michael Beers

**BASE Coordinator**

John Howard

**Flathead County****Coordinator**

Lynae West

**Independent Living Specialist**

Dianna Kintzler

**Independent Living Specialist**

Vacant

**SD-CFC/PAS Specialist**

Aleya Raymond

**Ravalli County****Coordinator**

Becky Fleming-Siebenaler

**Independent Living Specialist**

Anna Barnes

**People First Advisor/IL Specialist**

Mary Millin

**Lake County****Coordinator**

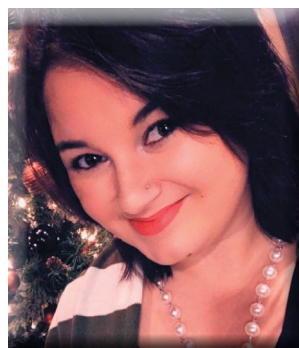
Susan Morris

**Independent Living Specialist**

Betty LaFountain

**Independent Living Specialist**

Mariah Armstrong

**NEW SUMMIT STAFF****Kathy Nolte, Administrative Assistant, Missoula**

Summit Independent Living is excited to announce the hiring of our new Administrative Assistant, Kathy Nolte, who works out of our main office in Missoula. Having just started a couple weeks ago, Kathy is already progressing through her work and putting her own touch on things. The following is what Kathy says of her experience and coming to Summit:

I was born and raised in Lewiston, Idaho and moved here to Missoula in May 2020. I've done administrative work in several different environments, as well as a background in health insurance. I have no children, just a spoiled chihuahua mix, Toki Taquito you'll see running around the office on occasion. I grew up with a grandmother who was a proud special education teacher for junior high and high school students. I have the most vivid memories of conversations with her explaining in detail why she loved what she did and how she felt honored to be able to be with these children. Growing up, I got to hear daily the obstacles my grandma's students fought with, and especially the ones they overcame. I'm proud to help carry on that legacy, and I'm proud to be part of Summit while doing so.

**Gavin Workman, Outreach and Employment Services Coordinator, Missoula**

Summit is excited to announce having hired Gavin Workman in the position of Outreach and Employment Services Coordinator. Gavin has already started and shared the following of his experience:

My name is Gavin Workman. I am in love with western Montana and enjoy spending my free time exploring the outdoors by camping, hunting, fishing, hiking, and snowboarding. Recently I started restoring two 1978 motorcycles and spent most of last summer riding with Bikers Against Bullies by helping with and riding in charity rides for various organizations. I am excited to return to the community and to enjoy the amazing live

music Missoula has to offer.

I graduated from Lewis Clark State College with a BS in psychology and a minor in fine arts in 2011. I worked with Pre employment transitions services for two different vocational rehabilitation contractors in Missoula from 2017 to 2019. I have been volunteering and attending BASE since 2017 and realized it was the primary driving force for helping me to believe in myself and to establish the most meaningful relationships I have ever experienced. I have always viewed BASE and Summit as the best nonprofit in Missoula. When I was offered a position as the outreach and employment services coordinator it was honestly my dream job coming true. I am so excited to work for Summit and to help expand the employment services it provides to its consumers. I look forward to helping Summit grow into the new building and to help continue the amazing services Summit provides for everyone in Missoula and the surrounding areas.

Summit has started taking Pre-ETS referrals and looks to start providing adult vocational rehabilitation services, and customized employment services in the near future. Local coordinators and I are all very excited for this new phase in Summit's future and expansion of services available to its consumers.

## Service Update

**Due to the COVID-19** pandemic, Summit continues to provide independent living services by phone, email, and virtual means, since we have not yet opened our offices to the public. We are monitoring COVID-19 activities in our local communities closely but are proceeding slowly with plans to gradually reopen our offices out of an abundance of caution. Many of Summit's staff members are at elevated risk for COVID-19, as are the individuals with disabilities who we serve.

We are happy to announce that Summit has received grant funding through the **CARES Act** to provide **additional independent living services** to people with disabilities in our service area who have been impacted by COVID-19. These services include access to affordable and accessible housing, transitioning from institutions or nursing homes into the community, access to necessary technology, improving safety and independence, and access to PPE ...

**For more information or questions regarding eligibility, contact your local Summit office in Missoula, Hamilton, Ronan or Hamilton.**

Visit [www.summitilc.org/contact](http://www.summitilc.org/contact) for local Summit office contact information.



## Summit Virtual Social Security Orientation Schedule 2021



If you need assistance applying for disability benefits, we ask that you take part in a Social Security orientation prior to scheduling your appointment.

Orientations are held on the 2nd and 4th Thursday of each month from 11:00 AM to 12:30 PM.

### 2nd Thursday Monthly

**Meeting URL:** <https://us02web.zoom.us/j/89388805948?pwd=Zy91QjduVEVhUlkxWmZUcTZKVHh0UT09>

**Join by phone:** 1 (669) 900-9128

**Meeting ID:** 893 8880 5948

**Passcode:** 705752

### 4th Thursday Monthly

**Meeting URL:** <https://us02web.zoom.us/j/86789824245?pwd=RkwzYnMlRU9pdC9ob2wyb2xmTVI1dz09>

**Join by phone:** 1 (253) 215-8782

**Meeting ID:** 867 8982 4245

**Passcode:** 165841

**For more information please go to [www.summitilc.org](http://www.summitilc.org) or call your local office.**

Missoula: 406-728-1630

Ronan: 406-215-1604

Hamilton: 406-363-5242

Kalispell: 406-257-0048

# BASE Update

BASE, Summit's very own all-ages, all-abilities, activity and social engagement center, has adapted and made a lot of adjustments over the past year. Moving all programming to a virtual Zoom platform and class changes from Yoga to Improv, from Wrestling Club to Photography Group, and from Audio Book Club to CHEW Cooking classes are but a few examples. Like everyone has, we kept open minds and modified our service delivery methods to continue services while maintaining participant safety and meeting all pandemic requirements.

As 2021 proceeds, BASE staff will continue exploring new programming opportunities. Depending on COVID's status and the weather, we hope to begin offering some form of hybrid virtual and socially-distanced, in-person outdoor activities when we are able to safely do so. With optimism and hopes of returning to some semblance of normality in the near future, we are seeking donations for outdoor games such as botchy ball, ladder ball, and bag toss. These are games people can enjoy together while remaining safe and distant from others.

We will keep everyone posted as we look to move to the next step of our outdoor programming. In the meantime, please join us for some BASE Virtual Programs... open to all Ages, All Abilities, and FREE and open to everyone! To the right are updates from the upcoming BASE calendar



## MISSOULA GIVES: MAY 6-7



### MISSOULAGIVES

Since Summit's founding in 1981, we have leased office space in various places around Missoula. Unfortunately, as the nature of and need for our services continues to grow and the complexity of the local, state, and national issues and programs we work towards making inclusive continue to evolve, we have outgrown our space. Currently, Summit's programs are split into two different locations in Missoula. This has not been ideal for program connectivity, efficiency, public access, or in pursuit of fulfilling our mission and bringing disability issues front and center so that they may be addressed effectively and holistically.

Summit's vision is a facility that can meet all of our current and future space needs, allowing the organization to become more centrally located and ingrained in the Missoula community where we can carry out our mission and philosophy more effectively and visibly.

We're excited to engage you in this community vision, which includes an impressive universally designed building and a forever home for Summit's core services and our popular activity center, BASE – a gathering and interdependent programming space for Montanans of all ages, interests and abilities.

We're counting down the days to May 6-7 and Missoula Gives. We need your help to make our campaign a success. To support Summit, please visit <https://www.missoulagives.org/organizations/summit-independent-living>.



### SUMMIT BOARD

Steve Hackler  
Molly Blair  
Jenny Montgomery  
Mark Cash

Peter Drakos  
Michelle McLane  
Susanne Meikle  
Kelly Sellars



# BASE EVENTS

725 West Alder, #4 Missoula, MT

BASE stands for home base, like in hide and go seek. In life, you have to establish a BASE first, that's where we come in.

## BASE Virtual Activities

\*BASE virtual programming closed April 5-April 9, 2021 while planning spring activities.

Monday, April 12 CHEW cooking class from 1pm to 3pm. Cooking healthy French toast, pancakes, and crepes.

YODA (You Opening Doors through Advocacy)  
Tuesdays 4-5:30pm on Zoom

All Abilities Yoga  
Wednesdays 4-5pm on Zoom

BASE Wrestling Foundation BWF  
1st and 3rd Wednesdays monthly 5-6pm  
On Zoom and Facebook

Virtual Photography Group  
2nd and 4th Wednesday monthly 5pm on ZOOM

BASE Virtual Game Night  
Thursday from 2 pm to 4 pm. Join us for Trivia and chatting

BASEment Improv  
Thursdays BASEment Improv 5-6:15pm.  
Join us for Improv, games, and laughs.

**For BASE schedule updates and additional events go to**

[www.summitilc.org/calendar](http://www.summitilc.org/calendar)

**or check the BASE Facebook page at**  
<https://www.facebook.com/base725>

**To get involved or to share ideas of new BASE programs, contact BASE**  
[jhoward@summitilc.org](mailto:jhoward@summitilc.org) or [mbeers@summitilc.org](mailto:mbeers@summitilc.org).

## CLASSIFIED ADS

### Silver Spring wheelchair ramp 10' L x 36" W

Made of high-strength light weight aluminum. \$297obo. Contact: [tamera144@gmail.com](mailto:tamera144@gmail.com) or 406-363-4898

### 2017 Honda Pilot Experience

Leather interior, tow package, 24000 miles vmi Northstar conversion. Manual ramp. \$38,000 OBO. 406-529-1266

### 1997 Ford Econoline Wheelchair Accessible Van

Miles: 213,737  
Call Twyla 231-818-0065

### Victory 10 LX scooter

New! \$2500, Call or text Nina 880-2855

### Smart Talker text scanner

Slightly used, \$700. Contact Larry at 406-633-4036 or [ketch1969@gmail.com](mailto:ketch1969@gmail.com)

**Nova Walker, Quontum 600 power wheelchair, Commode, 2 Transfer Benches, Beezy Manual Wheelchair.** Call Gary (406) 224-5527 or [garylee032051@gmail.com](mailto:garylee032051@gmail.com)

### Symmetry Stander

Comfortable, easy-to-use seat stander Call Madison (406) 865-0221

**Garaventa Super-Trac Portable Wheelchair Lift for stairs.** Purchased new for \$12,000 and used only a few times. Will sell for \$2,500 OBO. Contact Jacob Francom, Troy Public Schools, [jfrancom@troyk12.org](mailto:jfrancom@troyk12.org), (406) 295-4520.

### Acorn Stair lift

For going up to 6 stairs while seated. \$300 OBO. Call John at 546-7003.

To get listed contact Tyler Stosich at (406) 728-1630 or email [tstosich@summitilc.org](mailto:tstosich@summitilc.org).

Or, list and find items on the MonTECH exchange:

<http://montech.ruralinstitute.umt.edu/mtddb/>

Summit is funded in part under an agreement with the Montana Department of Public Health and Human Services. Any statements herein do not necessarily reflect the opinion of the Department.

# SUMMIT INDEPENDENT LIVING

700 SW Higgins, Suite. 101  
Missoula, MT 59803

Return Service Requested

Phone: 406-728-1630  
Toll-Free: 800-398-9002  
Fax: 406-829-3309

Website: [www.summitilc.org](http://www.summitilc.org)

Non-Profit Org.  
U.S. Postage  
PAID  
Missoula  
Montana  
Permit No. 536

*Building Awareness, Advocating Change*

THE SUMMIT INDEPENDENT

April 2021

This publication is available in alternative format on request. Please call 1 (800) 398-9002.



## Fresh Food Box

Summit Independent Living and Missoula Food Bank & Community Center are working collaboratively to make the Fresh Food Box program available to more people with disabilities.



### Eligibility requirements:

- must have a physical or mental disability that impacts your ability to live independently;
- live in Missoula
- sign up for Summit service;
- be experiencing challenges to your health, safety, ability to live independently, receive vital services, gain or continue employment, or participate in community activities due to COVID-19;
- be experiencing food insecurity due to lack of income, and
- need home delivery of food due to sheltering in place or lack of transportation/assistance to obtain food in the community.

For more information or to apply please call the Summit office at 406-728-1630 or send an email to [missoula@summitilc.org](mailto:missoula@summitilc.org).



You can always sign up to get this newsletter by email by visiting [www.summitilc.org](http://www.summitilc.org) and signing up